

LDCM-43xx

PROGRAMMER INSTRUCTIONS (FLASH UTILITY)



The PSE Technology LDCM-43xx Flash Programmer Utility offers a user friendly method to perform field upgrades to your instruments firmware. Both the instrument and software have been optimized to ensure that users can easily upgrade their instruments when new firmware versions become available. As an added benefit to our registered user, we will attempt to notify you when new firmware versions become available.

This program uses the standard USB port to load the compiled image file (Object Code) LXXYY_ZZ.pse to the instruments internal flash memory. Where XX is the last two digits of the product model number, YY is the major firmware version, and ZZ is the minor firmware version number.

FLASH PROGRAMMER UTILITY INSTALLATION

The program should automatically be installed on the computer when the LDCM-43xx Controller program and the associated USB drivers were installed. The installation can be verified by navigating to the short-cut within the Start Menu, Start>Programs>PSE Technology>LDCM-43xx>LDCM43xx Program Utility. If the program is not installed the user can install the program using the installation CD that came with the instrument.

USING THE FLASH UTILITY PROGRAM INSTRUCTIONS

Use the short-cut within the Start Menu to execute the program. If everything is operating properly the following window will appear:

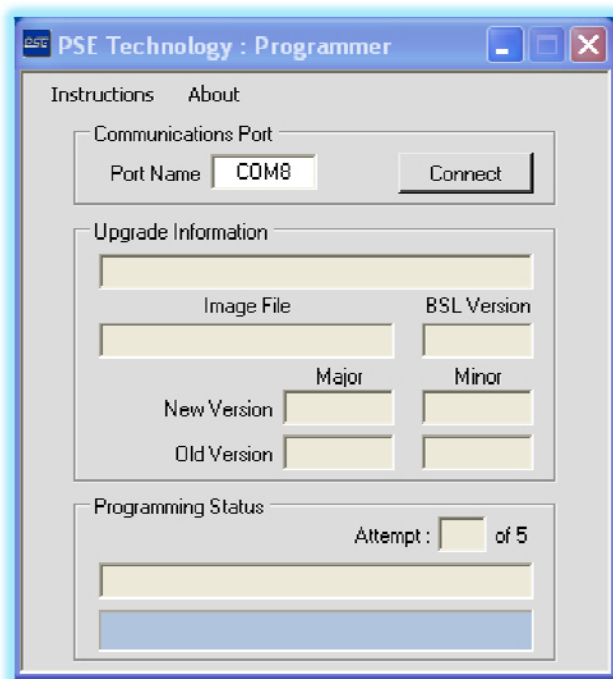


Figure 1 – PSE LDCM-43xx Flash Utility Screen

1. **Menu Options:** The top highlighted section contains two menu options, **Instructions** and **About**. Clicking on the **Instructions** menu item will display these instructions in an Acrobat reader window. Clicking on the **About** menu item will display this programs about dialog box.
2. **Communications Port:** The next section is where the user identifies the communications port name that their specific computer has assigned to the attached LDCM-43xx Laser Diode Controller Mount. Enter the communications port name into the Port Name text box. Note, you must use the full port name in this text box (i.e. it must contain the COM letters and the associated port number). If you do not know the assigned port name, perform the following steps to identify the port number:
 - a. Ensure the instrument is attached to the computer and bus powered, power switch LED is illuminated RED.
 - b. Open the Device Manager (located in "Control Panel\System" then select the "Hardware" tab and click "Device Manger") and select "View > Devices by Connection", the port name appears under the "Ports (Com & LPT)" as LDCM-43xx Device (COMx)". You should now see a window similar to the one shown below. Type your specific port

number proceeded by the letters COM, COM7 as shown in the screen below, into the Port Name text box.

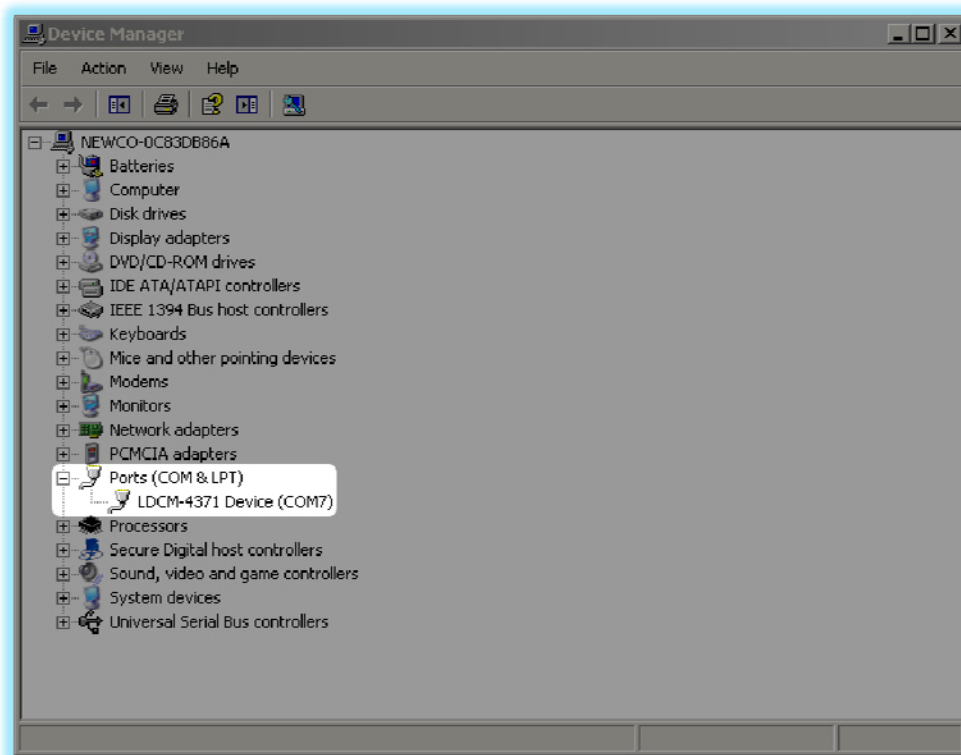


Figure 2 – Communications Port Name Identification Screen

- c. Once the appropriate COMx name has been entered into the Port Name text box, click on the Connect Button. Once the instrument is connected a standard windows file selection dialog box will be activated. Use the dialog box to navigate to the new image file that will be downloaded to the instrument.
3. **Upgrade Information:** Once the new image file has been selected, the upgrade information section will be populated with the upgrade details.
4. **Programming Status:** Once the upgrade information has been populated the new image file will begin downloading. As the download process proceeds the user will be informed of the status with both textual information and a status bar.
5. The programming process should now be complete, close out the PSE LDCM-43xx Flash Program Utility and use the instrument as usual.

Although we have made many efforts to ensure this utility is error free and user friendly, you may experience unanticipated or unexpected behavior. This will be made apparent with pop-up warning message boxes explaining the cause of the failure. If you experience a problem during the download process, you will need to disconnect the instrument from the USB port and start the entire process over.

If you are unable to troubleshoot a problem or are concerned about using this utility please contact us, we will be more than happy to help you.

WWW.PSETECH.COM

EMAIL: SUPPORT@PSETECH.COM

1111 JEFFERSON DRIVE ♦ BERTHOUD, COLORADO 80513 ♦ PHONE: (970) 344-4774 ♦ FAX: (970) 344-6012
